

Clinical Cooperation Groups

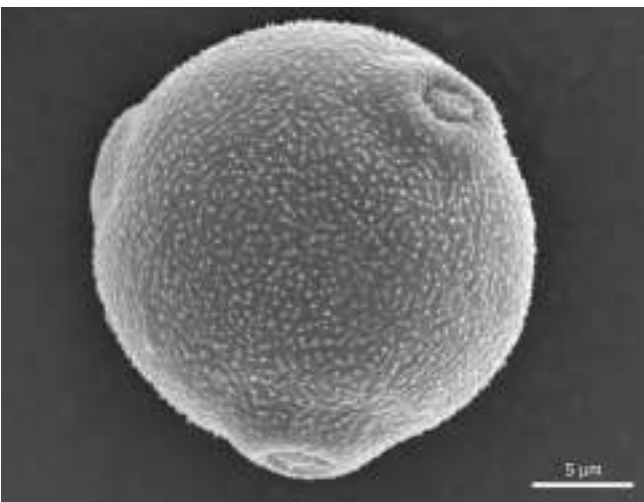


Putting the heat on tumours.
The SIGMA_EYE_MR Applicator combines hyperthermia and nuclear magnetic resonance (NMR). Prof. Dr. Rolf D. Issels presented the results of the world's first ever randomised phase-III study in June 2007. They prove the efficacy and superiority of combined treatment method (hyperthermia plus chemotherapy) to chemotherapy alone.

The clinical cooperation groups are established as time-limited projects based on excellent existing scientific collaborations and are integrated in the research themes of the GSF.

The following cooperation groups have been established together with Ludwig Maximilians University, the Technical University, the Max-Planck Institute of Psychiatry (all in Munich) and the Asklepios Specialist Clinics in Munich-Gauting:

- Antigen-specific Immunotherapy
- Environmental Dermatology and Allergology
- Haematopoietic Cell Transplants
- Immunoregulation in Childhood
- Immunotherapy of Urological Tumours
- Innate Immunity
- Inflammatory Diseases of the Lung
- Molecular Neurogenetics
- Molecular Oncology
- Osteosarcoma
- Paediatric Tumour Immunology
- Pathogenesis of Acute Myeloid Leukaemia
- Tumour Therapy with Hyperthermia



Allergy trigger.
A picture of birch pollen taken through an electron microscope.